

VACUUM SEAL ROTATING VALVES

STORCI DESIGN FOR MAXIMUM SERVICE LIFE



rev. 0049.2404.31

■ Vacuum seal rotating valve

- Innovative lateral seal system with anti-seizure feature.
- Greater component efficiency and service life.
- Option of ordering the impeller only (money saving opportunity).

VACUUM SEAL ROTATING VALVES

The vacuum seal rotating valves manufactured by Storci incorporate an **innovative lateral packing seal system** which we have designed to improve “flour-tightness”, preventing flour from coming into contact with the lubricating grease (anti-seizure function). In this way **optimum component operation and a longer service life** are guaranteed. All Storci vacuum seal rotating valves are available in versions with a two- or three-cup impeller.

Main technical characteristics:

- Quality mechanical cast iron stator.
- Complete with bearings and sealing rings.
- Cast iron bearing supports.
- Carbon steel impeller treated with hardened chemical nickel plating.
- Lateral packing seal system.
- Hardened steel scraper blades

We **recondition used vacuum seal rotating valves** in our workshop including:

- boring of the cast iron stator;
- impeller grinding and scraper blade replacement;
- replacement of bearings and sealing rings;
- repainting in the original colour;
- **correct operation testing.**

We guarantee an **assistance and reconditioning service for Braibanti vacuum seal rotating valves**, thanks to our in-depth knowledge of these components acquired in over 30 years of study.



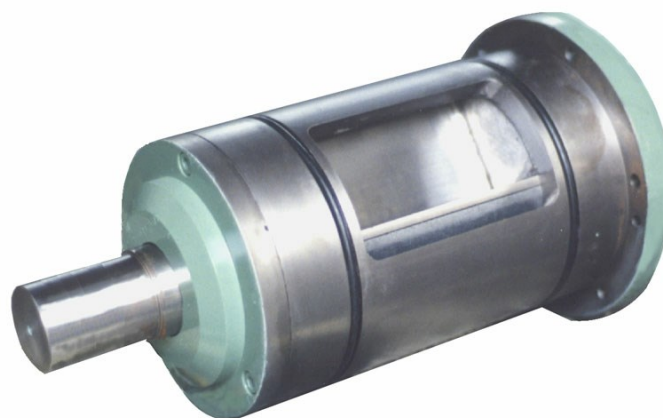
Vacuum seal rotating valves



Examples of vacuum seal rotating valves



■ Vacuum seal rotating valve



■ Vacuum seal rotating valve

VACUUM SEAL ROTATING VALVES



Vacuum seal rotating valves



Examples of vacuum seal rotating valves



facebook.com/storci.spa



youtube.com/user/StorciPastaMachinery



linkedin.com/company/storci-spa

Storci S.p.A.
via Lemignano, 6 - 43044 Collecchio (Parma)
phone: +39 0521 543611 fax: +39 0521 543621
www.storci.com - sales-storci@storci.com

